

VERTICAL DOORS, INC.

VerticalDoors.com

1365 E 6TH ST CORONA CA 92879
SALES 951.273.1069 FAX: 951.273.1854



ACURA TSX 08-14

MADE AND PATENTED IN THE USA WITH PATENT
#7,941,897; #7,552,514; #6,808,223 #6,845,547;
#7,140,075; #7,059,655; AND OTHER PATENTS PENDING
USA PATENTS WILL BE AGGRESIVELY ENFORCE!

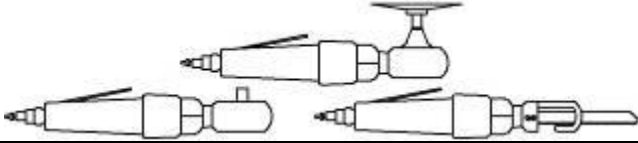
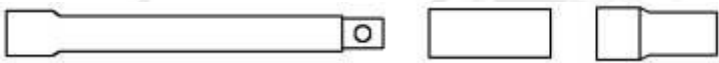
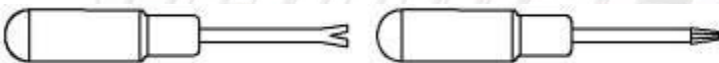


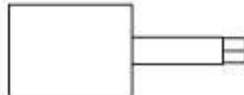

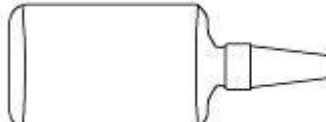
VERTICAL DOORS, INC.
VerticalDoors.com

**PLEASE CAREFULLY READ ALL INSTRUCTIONS
BEFORE ATTEMPTING TO INSTALL THIS PRODUCT.
FOR QUESTIONS PLEASE
CONTACT US AT (951) 273-1069**

THIS KIT INCLUDES:

- 16 M8-1.25X30MM BOLTS WITH WASHERS
- 2 SHOULDER BOLTS WITH WASHERS
- 2 PINS
- RIGHT AND LEFT HINGE ASSEMBLY
- 2 SHOCKS 560 PSI

TOOLS REQUIRED FOR INSTALLATION:

	<ul style="list-style-type: none"> ➤ AIR RACHET, GRINDER AND CUTTER.
	<ul style="list-style-type: none"> ➤ 7MM, 8MM, 10MM, 11MM, 13MM, SOCKETS AND EXTENSION.
	<ul style="list-style-type: none"> ➤ FORK AND PHILLIP'S SCREW DRIVERS
	<ul style="list-style-type: none"> ➤ SPACERS FOR THE DOOR GAP.
	<ul style="list-style-type: none"> ➤ 3/16 ALLEN WRENCH
	<ul style="list-style-type: none"> ➤ 1/4 TORX BIT
	<ul style="list-style-type: none"> ➤ 9/16 WRENCH
	<ul style="list-style-type: none"> ➤ LOCKTITE RED

OTHER TOOLS MAY BE NEEDED DEPENDING ON YOUR VEHICLE.

(Note: The pictures on the manual are for reference only they may not match your vehicle.)

Disconnect the battery.

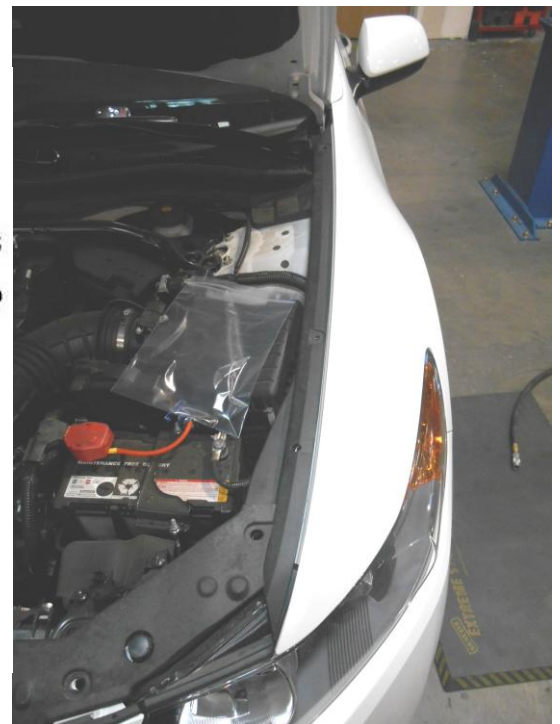
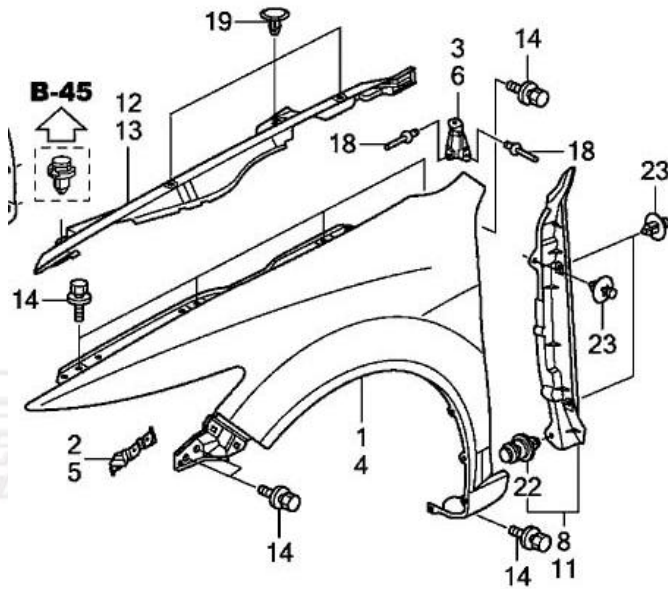
Remove fender:

Remove all Phillip's screws and fasteners from the wheel well.

Open the hood and remove all the bolts in the engine bay securing the fender to the body.

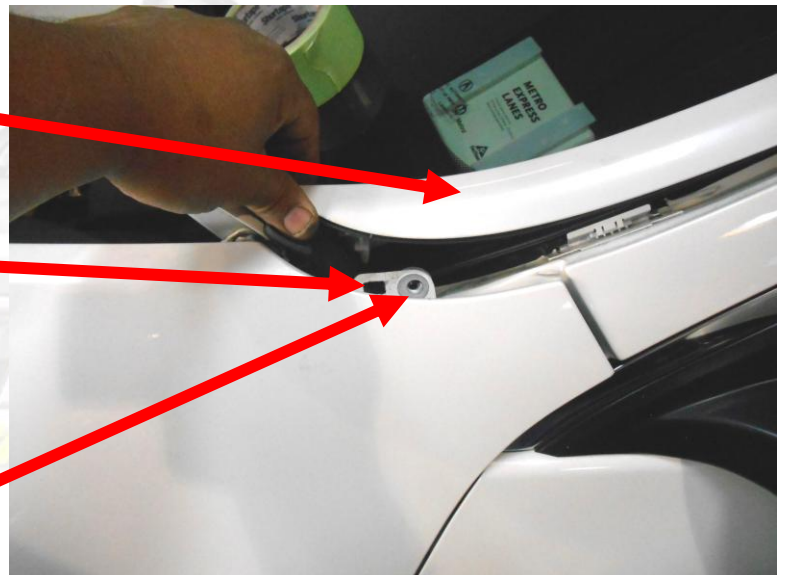


Remove the bracket and bolts securing fender to the bumper by pulling splash guard by the front bumper.



Note there is a bolt hidden under the "A" pillar trim as shown on the right.

Push the clip from the inside (windshield side) to release it. Be careful when removing the clip. Once the clip is loose you can pull on the "A" pillar trim to get access to the bolt securing the fender.



Remove the bolt securing the fender at the bottom of the fender by the side skirt.



Open the door and remove the bolt securing the fender to the body by the top factory door hinge as shown



Remove the door catch:
Open the door and remove bolts from the body and from the door. Push the door catch inside the door.

You will need to remove the door panel to retrieve the door catch.

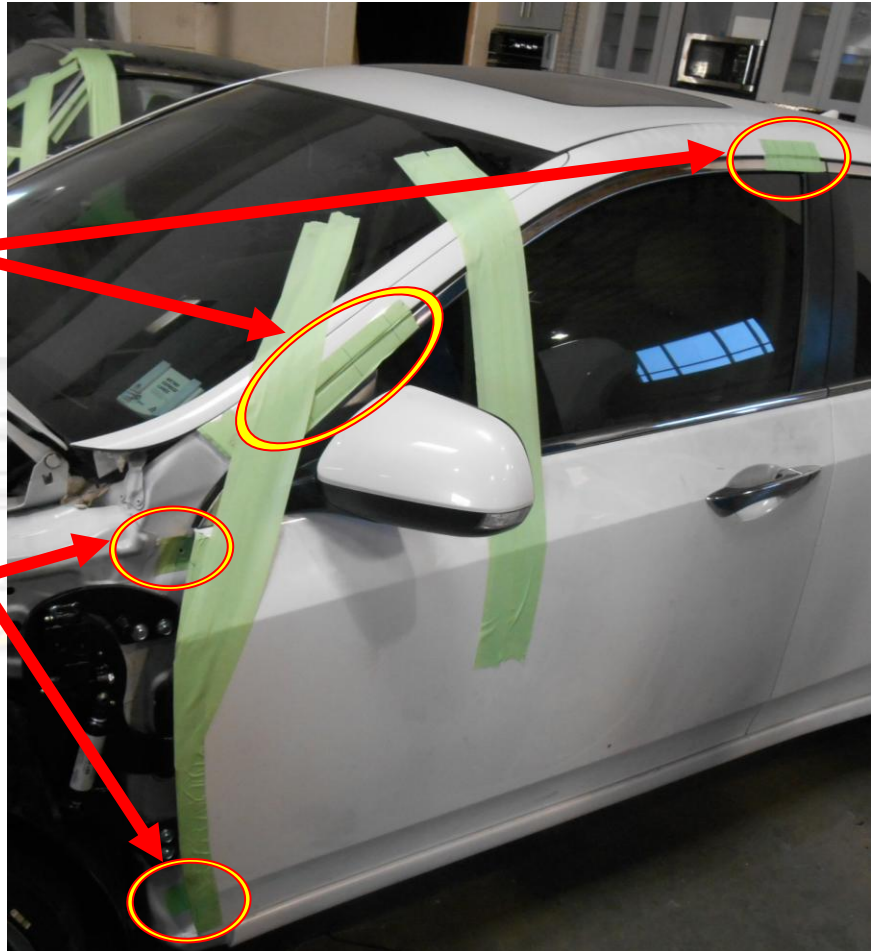


Factory door hinge removal

Close door and use painter's tape to secure the door in preparation for factory hinge removal.

Mark the factory door location before removing the factory door hinges.

Also make sure to mark the distance between the apron and the edge of the door as shown, this will ensure a factory look and it will make realigning the door with the fender fast and easy.



After marking the door and disconnecting the wire harness remove the door factory hinges.

Hint (You can make your spacer out of paint sticks and about 8-10 turns of blue painters tape)*

Wire modifications.

You will have to relocate the Tire Pressure Sensor as shown on the right.

Place the tire sensor just behind the new VDI hinge system.



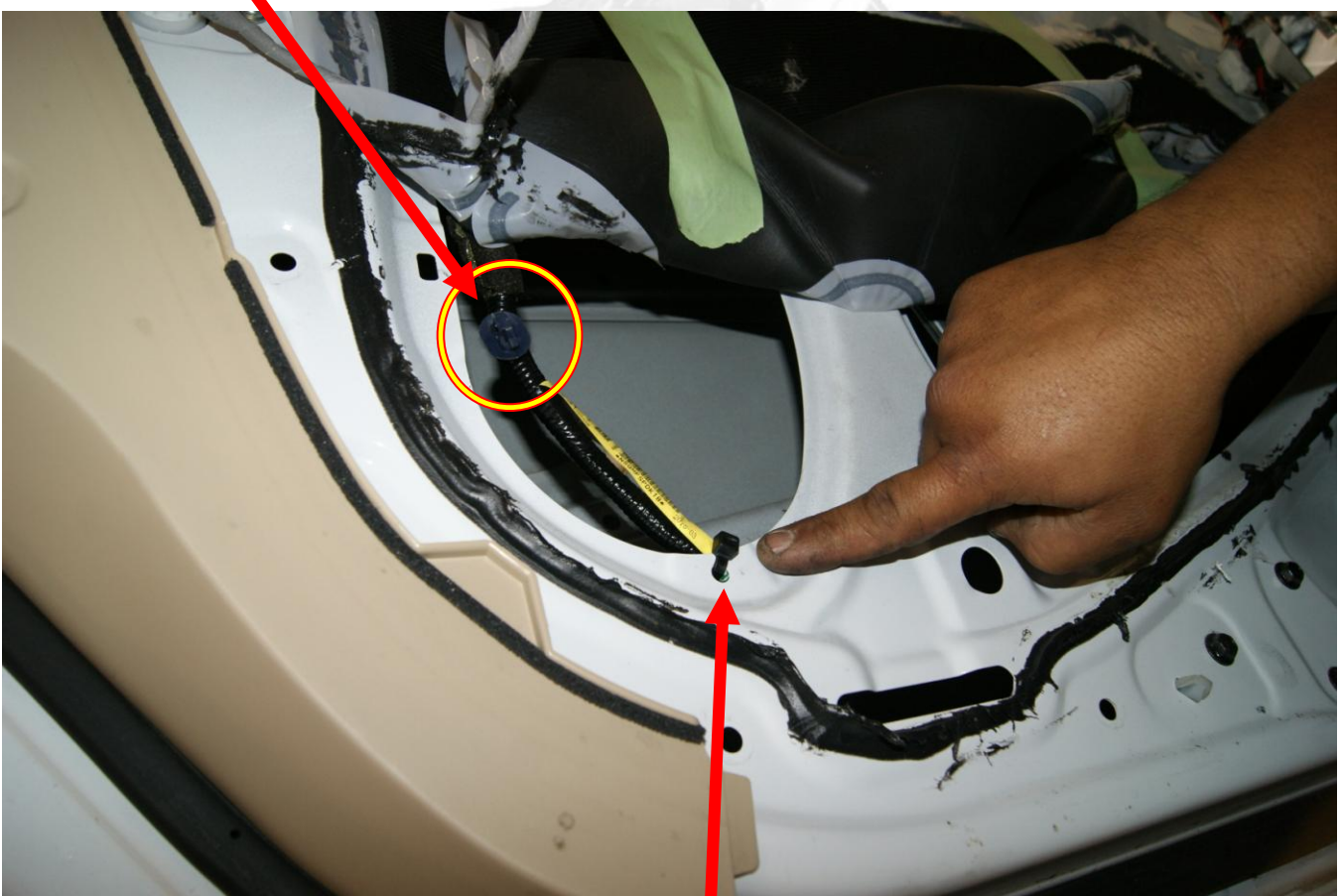
You will need extra wire slack to allow the VDI hinge system to work properly.

Remove the door speakers this will allow you to remove the door catch and the factory wire harness as shown on the right.



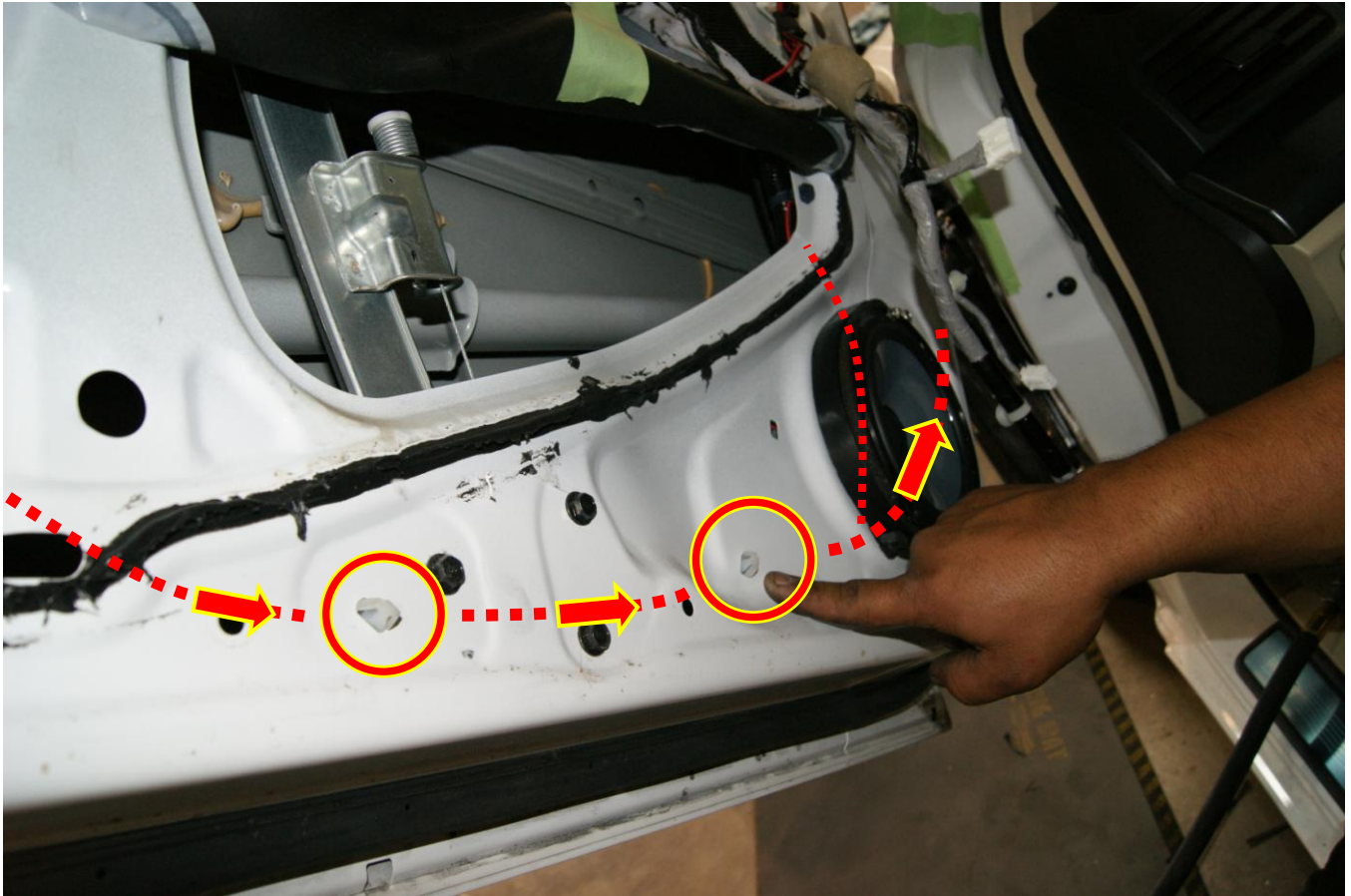
You will have to remove the main clip holding the door wire harness. Use zip ties to secure the wires back to the door once you gain the extra wire harness.

Pull on the door cover as shown below to gain access to the wiring at the rear bottom of the door. Remove the upper clip as shown. This will allow you to pull on the wires and gain extra wire slack as shown below



Used zip ties to secure the wire to the door as shown.

You will have to remove the clips. Remove the clips from the factory wire and move them back, this will move the factory wire forward giving you the extra wire slack needed. In some cases you may have to extend two wires that go to the power window motor.



Once you have gained the necessary wire slack you can replace the door panel.

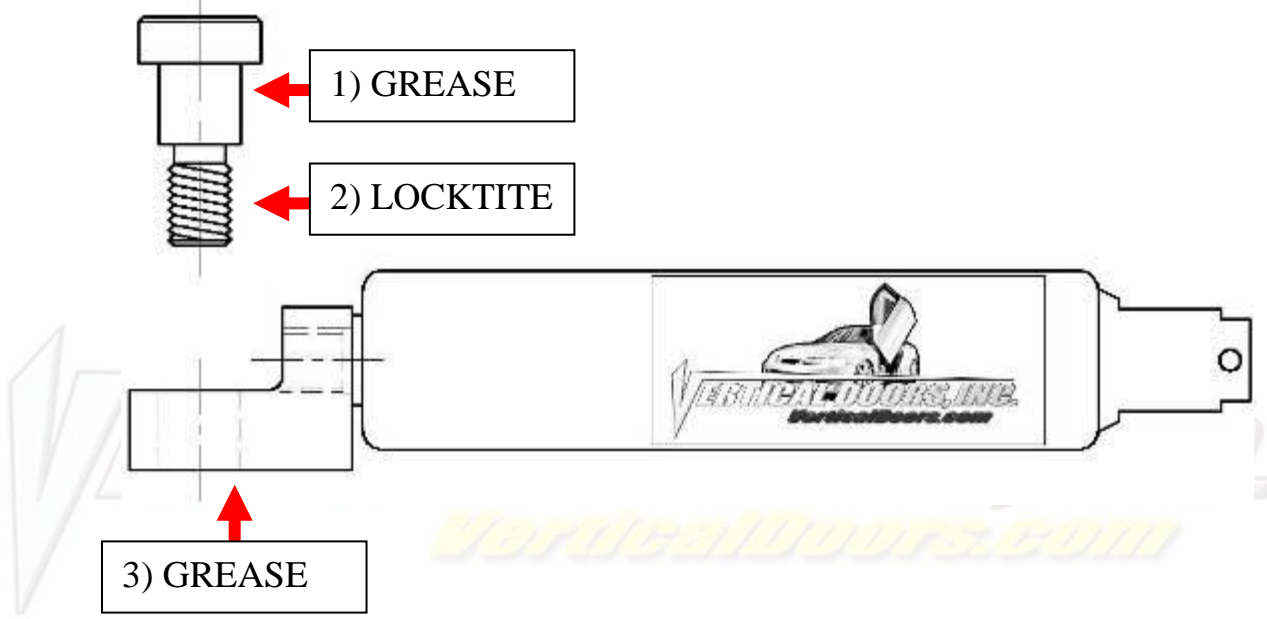
Install new Vertical Doors Inc. system:

Once you have marked the exact factory location of the door you are now ready to remove the factory door hinges.

Install the new VDI hinge as shown on the right. Make sure all the marks are aligned to the factory location.

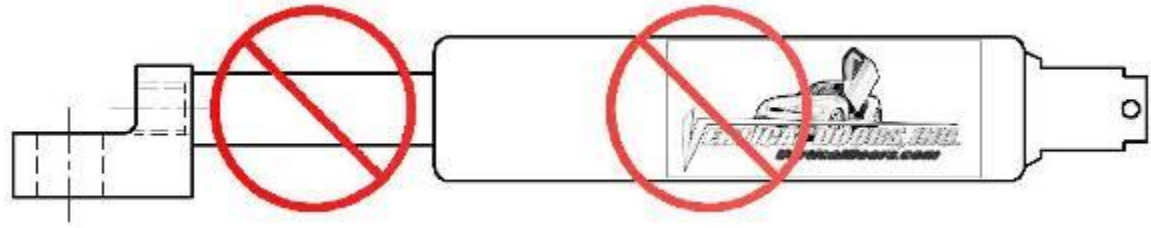
Hint Tighten the bolts on the door first and then install the bolts on the body.*





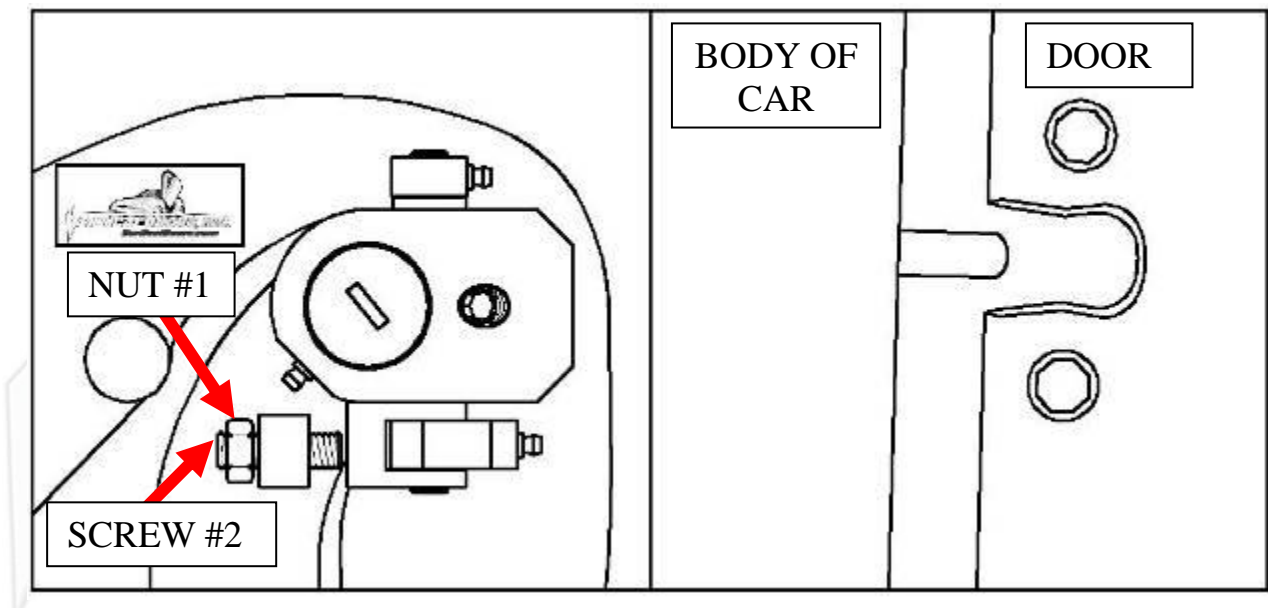
***IMPORTANT STEP: DO NOT SKIP THIS STEP. THIS STEP IS CRUCIAL IN YOUR INSTALLATION PROCESS, IF THIS STEP IS NOT COMPLETED WHEN INSTALLING THE VERTICAL DOOR KIT; ALL WARRANTIES ARE VOIDED, AND MAY CAUSE FUTURE PROBLEMS WITH YOUR VERTICAL DOOR SYSTEM.**

- 1ST, make sure you put grease on the body of shoulder bolt where the arrow is pointing.
- 2ND, make sure you put red Loctite, where the arrow is pointing, on thread of shoulder bolt.
- 3RD, make sure you put grease on the bottom side of the shock end.



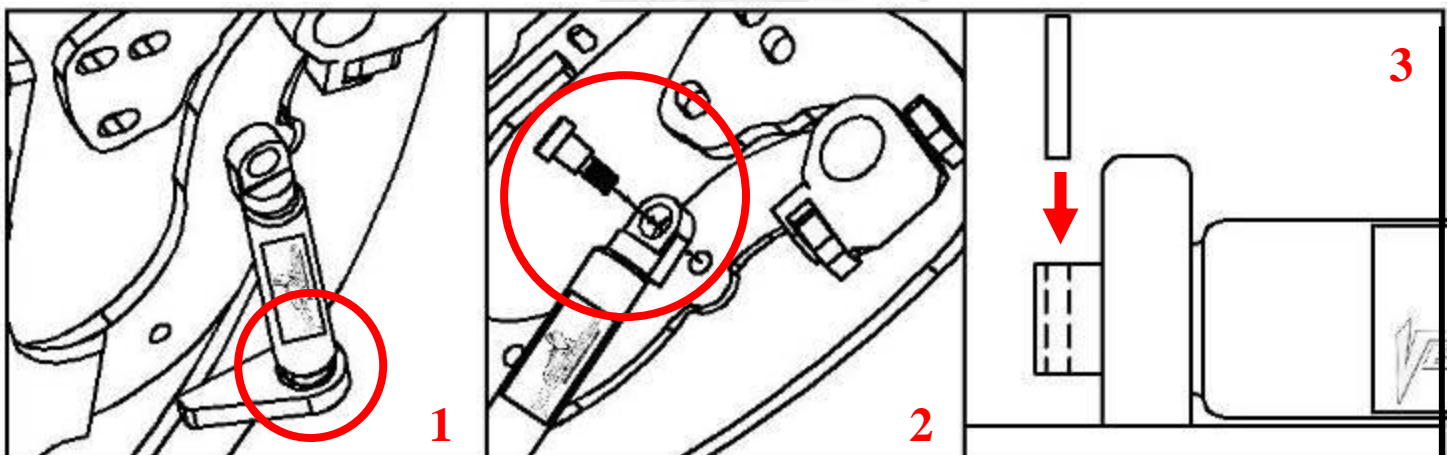
WARNING! THE USE OF ANY TYPE PLYERS, PAINT OR FOREING MATERIALS ON THE SHOCK'S BODY OR SHAFT WILL VOID THE WARRANTY.

Once hinge is locked in place, break nut #1 then turn Allen set screw #2 on fig until it hits the block then open the door and continue to adjust until the door matches with the striker, open and close door making sure it closes like factory.



Hint(leave #1 nut loose until shock is installed Allen set screw will have to be re-adjusted after shock is installed.*

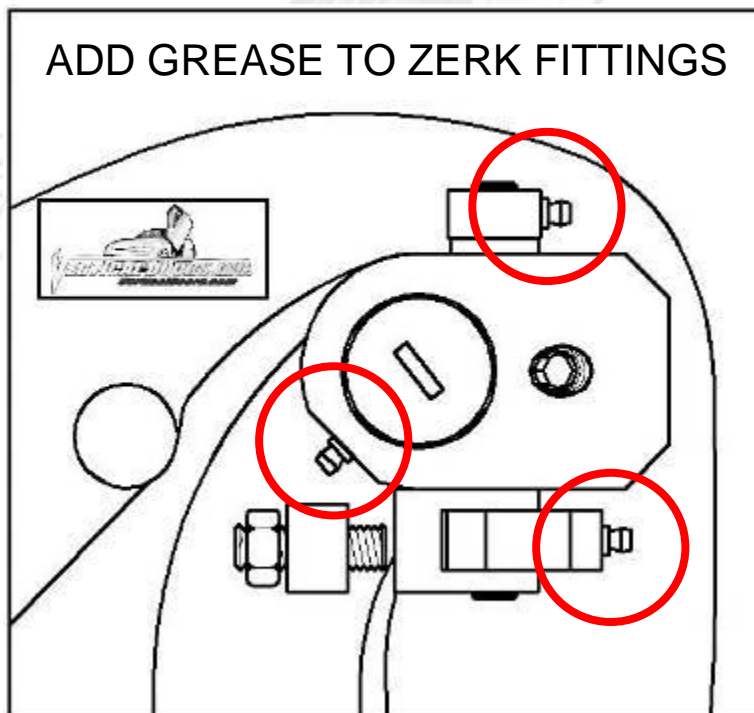
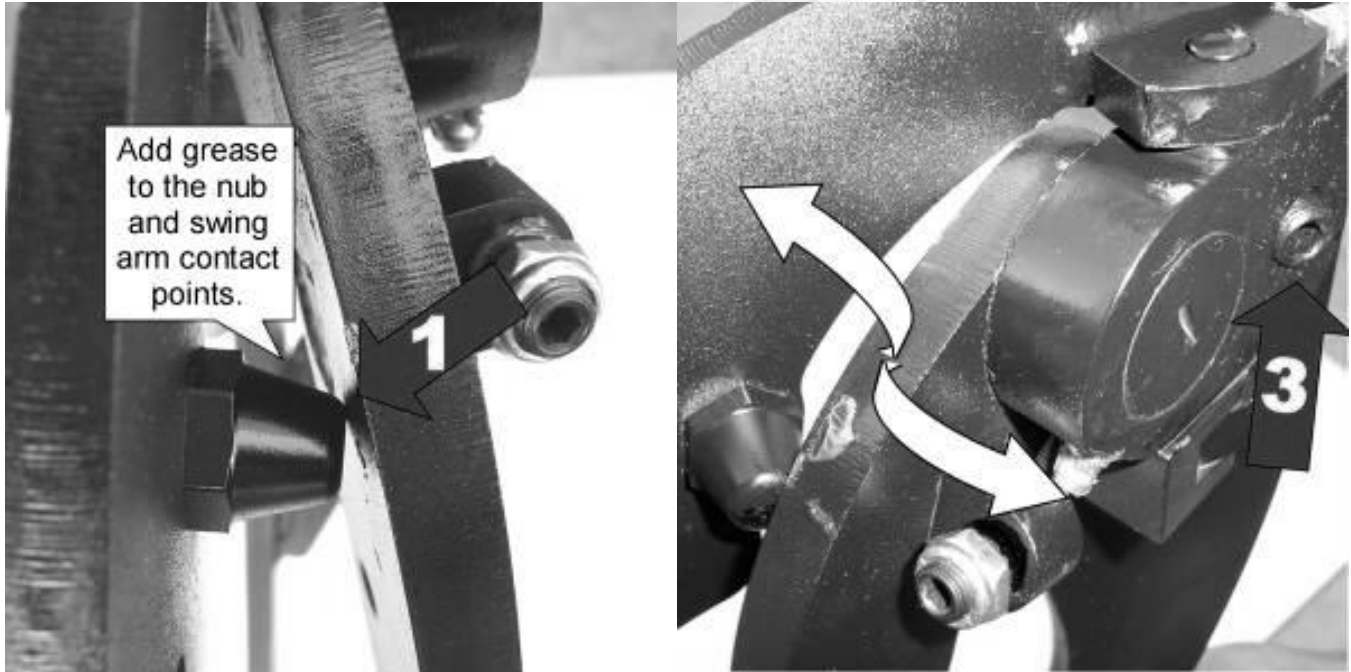
Install the shock.



Hint (You will need a helper to raise the door). (Slip the spherical rod mount into the spherical ball bearing (1). Using a 1/4 Allen wrench, tighten the screw into the swing arm (2). After the shock is installed secure it by installing the pin in the bottom shock end (3).*

After shock is installed re-install door panel and lift the door. Adjust door opening screw #3 clockwise until distance between nub and swing arm is enough so that the swing arm moves up and down freely.

Hint (Fine tune the Allen Adjustment screw (#2) to realigned striker with door. After the door is align test door by opening and closing, lifting and lowering door several times.*



Note: Do not install fender until the adjustment of the door is accurate, and the set screw is tightly secure. Also make sure everything is tight, adjustment is set and everything is Locktite.

Wire layout:

May sure your wires look like the pictures on the right.



Cut the inner lip of your fender to make room for the new Vertical Doors hinge. Note: After you have cut the fender use a sander or grinder and make sure the surface is completely flat.



Close the door and replace the fender by reversing step 2.

Hint(Make sure the electrical wires don't get pinched enough to damage wires)*

Thank you for your purchase of the
ACURA TSX 08-14

VERTICAL DOORS INC. SYSTEM

Simply Uplifting



NOTE:

Vertical Doors Inc. assumes no responsibility for any damages caused by improper installation